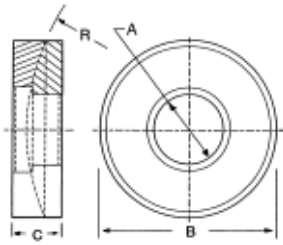


Spherical Washers



▲ Top (convex)



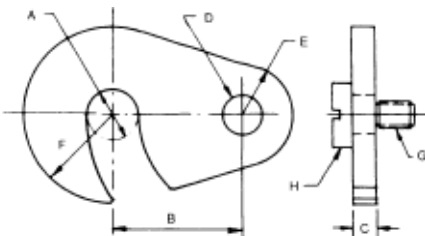
▲ Bottom (concave)

		INCH					
Low Carbon Steel PART #	Stainless Steel PART #	Bolt Size	A	B	C	Radius R	
SP-0	SP-0SS	1/4	9/32	5/8	3/16	3/4	
SP-01	SP-01SS	5/16	11/32	3/4	1/4	1	
SP-1	SP-1SS	3/8	13/32	7/8	1/4	1-1/4	
SP-15	SP-15SS	7/16	15/32	1"	5/16	1-1/2	
SP-2	SP-2SS	1/2	17/32	1-1/8	5/16	1-1/2	
SP-3	SP-3SS	5/8	21/32	1-3/8	5/16	1-3/4	
SP-4	SP-4SS	3/4	25/32	1-5/8	3/8	2-1/4	
SP-5	SP-5SS	7/8	15/16	1-3/4	3/8	2-1/2	
SP-6	SP-6SS	1	1-1/16	2	1/2	2-3/4	
SP-7	SP-7SS	1-1/8	1-3/16	2-1/4	1/2	3	
SP-8	SP-8SS	1-1/4	1-5/16	2-5/8	1/2	3	
SP-9	SP-9SS	1-1/2	1-9/16	2-7/8	9/16	3-1/2	
SP-10	SP-10SS	1-5/8	1-11/16	3-1/4	11/16	3-1/2	
SP-11	SP-11SS	1-3/4	1-13/16	3-1/4	11/16	3-1/2	
SP-12	SP-12SS	2	2-1/16	3-7/8	3/4	3-1/2	
SP-13	SP-13SS	2-1/4	2-5/16	4-1/2	7/8	4"	
SP-14	SP-14SS	2-1/2	2-9/16	4-1/2	7/8	4"	
SP-16	SP-16SS	2-3/4	2-13/16	5	1"	5"	

		METRIC					
Steel PART #	Stainless Steel PART #	Bolt Size	A	B	C	Radius R	
SP-106	SP-106SS	M6	6.4mm	12mm	4.2mm	9mm	
SP-108	SP-108SS	M8	8.4	17	5.6	12	
SP-110	SP-110SS	M10	10.5	21	6.5	15	
SP-112	SP-112SS	M12	13	24	8	17	
SP-116	SP-116SS	M16	17	30	9.6	22	
SP-120	SP-120SS	M20	21	36	11.7	27	
SP-124	SP-124SS	M24	25	44	15.2	32	
SP-130	SP-130SS	M30	31	56	19.2	41	

- Precision machined sets
- Available in case hardened carbon steel with a black oxide finish or stainless steel
- Bottom half works with spherical collar nuts
- Tops and bottoms can be ordered separately. Please specify when ordering.

Swing "C" Washers



- Case hardened
- Black oxide finish
- Shoulder screws sold separately

PART #	A	B	C	D	E	F	Tap for Shoulder Screw G	Shoulder Screw # H
SCW-37	13/32	1	1/4	3/8	3/8	3/4	1/4-20	SS-1
SCW-50	17/32	1-1/4	5/16	3/8	1/2	7/8	1/4-20	SS-2
SCW-62	21/32	1-1/2	3/8	1/2	9/16	1	5/16-18	SS-3
SCW-75	25/32	1-3/4	1/2	1/2	5/8	1-1/4	3/8-16	SS-4